

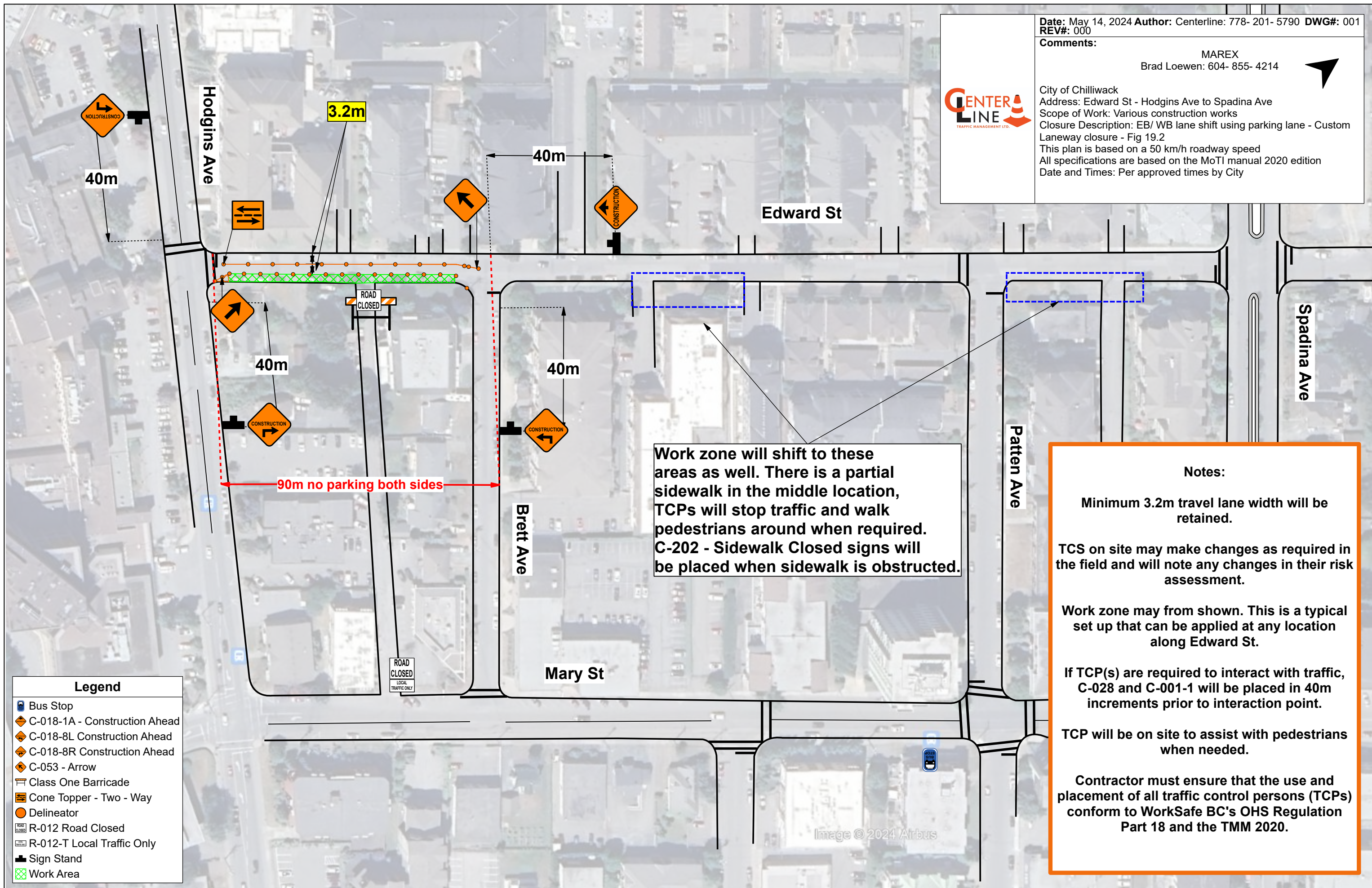
Date: May 14, 2024 Author: Centerline: 778- 201- 5790 DWG#: 001
REV#: 000

Comments:

MAREX
Brad Loewen: 604- 855- 4214



City of Chilliwack
Address: Edward St - Hodgins Ave to Spadina Ave
Scope of Work: Various construction works
Closure Description: EB/ WB lane shift using parking lane - Custom
Laneway closure - Fig 19.2
This plan is based on a 50 km/h roadway speed
All specifications are based on the MoTI manual 2020 edition
Date and Times: Per approved times by City



Work zone will shift to these areas as well. There is a partial sidewalk in the middle location, TCPs will stop traffic and walk pedestrians around when required. C-202 - Sidewalk Closed signs will be placed when sidewalk is obstructed.

Notes:

Minimum 3.2m travel lane width will be retained.

TCS on site may make changes as required in the field and will note any changes in their risk assessment.

Work zone may from shown. This is a typical set up that can be applied at any location along Edward St.

If TCP(s) are required to interact with traffic, C-028 and C-001-1 will be placed in 40m increments prior to interaction point.

TCP will be on site to assist with pedestrians when needed.

Contractor must ensure that the use and placement of all traffic control persons (TCPs) conform to WorkSafe BC's OHS Regulation Part 18 and the TMM 2020.

- Legend**
- Bus Stop
 - C-018-1A - Construction Ahead
 - C-018-8L Construction Ahead
 - C-018-8R Construction Ahead
 - C-053 - Arrow
 - Class One Barricade
 - Cone Topper - Two - Way
 - Delineator
 - R-012 Road Closed
 - R-012-T Local Traffic Only
 - Sign Stand
 - Work Area